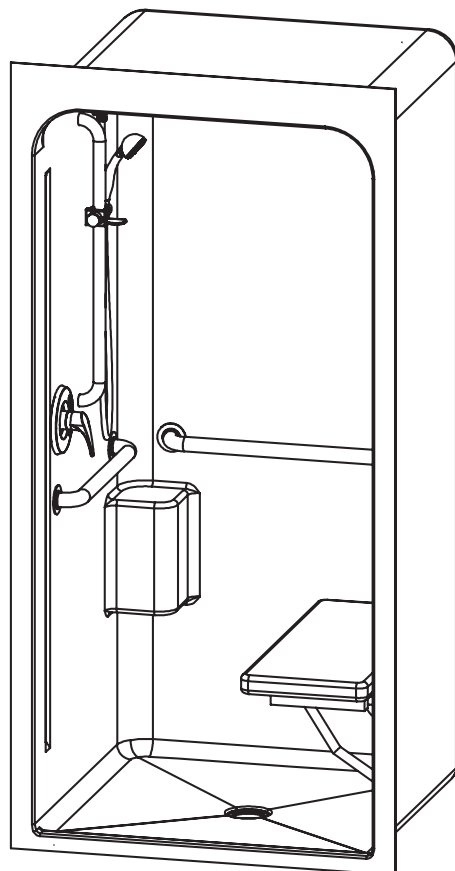


# 3636BFSMA – ACCESSIBLE SHOWERS

inches

Interior: 36 x 36 x 80 <sup>7</sup>/<sub>16</sub>

Exterior: 41 x 37 x 83 <sup>3</sup>/<sub>4</sub>



## FEATURES

- Massachusetts only
- Premium cast acrylic surface
- 1 <sup>3</sup>/<sub>4</sub>" skirt
- <sup>1</sup>/<sub>2</sub>" interior threshold
- Barrier free when properly installed
- Smooth wall
- Center drain
- Molded toiletry shelf
- Integral dome
- 5-year limited warranty

## OPTIONS

- RH or LH fixture wall
- Grab bars
- Fold-up seat
- Hand-held shower assembly with slide bar
- Pressure balancing mixing valve
- Soap dish
- Curtain rod and/ or shower curtain
- Dome light

## CODE COMPLIANCE

- 521 CMR

\*\*Code compliant when fully equipped and installed according to guidelines.

## AQUATIC ADVANTAGE

- 6 manufacturing facilities
- Private fleet
- Centralized customer service
- Field support

## COLOR & TRIM OPTIONS

Stock	Upgraded
White	Biscuit

\*\*Additional custom colors available.  
(Contact Customer Service)



Aquatic products may be specified as Lasco Bathware.



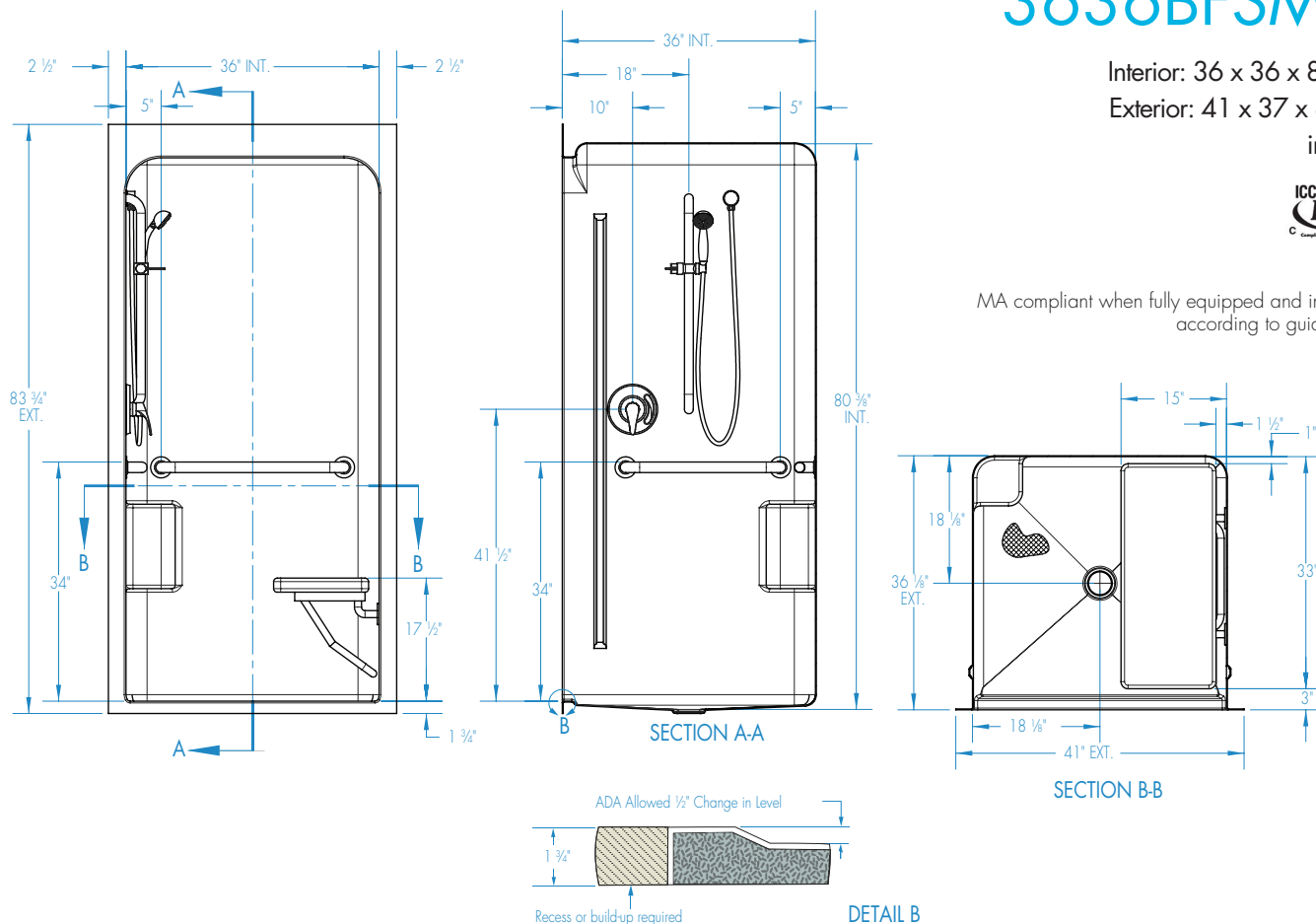
Aquatic products may be specified as Lasco Bathware.

# 3636BFSMA

Interior: 36 x 36 x 80 <sup>7</sup>/<sub>16</sub>"  
Exterior: 41 x 37 x 83 <sup>3</sup>/<sub>4</sub>"  
inches



MA compliant when fully equipped and installed according to guidelines.



## FEATURES

Dimensional Tolerance  $\pm \frac{3}{8}$ ". Dimensions needed for site preparation should be measured from the unit. Aquatic assumes no responsibility for preparatory work.

Type and Model #	Material	Wall Finish	Pieces	Drain	Dam/Skirt Height	Net Wt. lbs	Pkg. Wt. lbs
Shower #3636BFSMA	Acrylic	Smooth	1	Center	1 <sup>3</sup> / <sub>4</sub> " skirt, <sup>1</sup> / <sub>2</sub> " interior threshold	172	182

## DIMENSIONS

Specifications	inches
Width: Overall / Net	41 / 36
Depth: Overall / Net	37 / 36
Height: Overall / Net	83 <sup>3</sup> / <sub>4</sub> / 80 <sup>7</sup> / <sub>16</sub>
Enclosure Opening:	36
Skirt Height:	1 <sup>3</sup> / <sub>4</sub>
Drain Rough-In (from Back Wall)	19
Drain Rough-In (from Side Wall)	20 <sup>1</sup> / <sub>2</sub>

## FRAMING DIMENSIONS inches

Type	D Depth	W Width	H Height	A	B	C
Alcove	37	41 <sup>1</sup> / <sub>8</sub>	-	Box Out	20 <sup>1</sup> / <sub>2</sub>	19

