

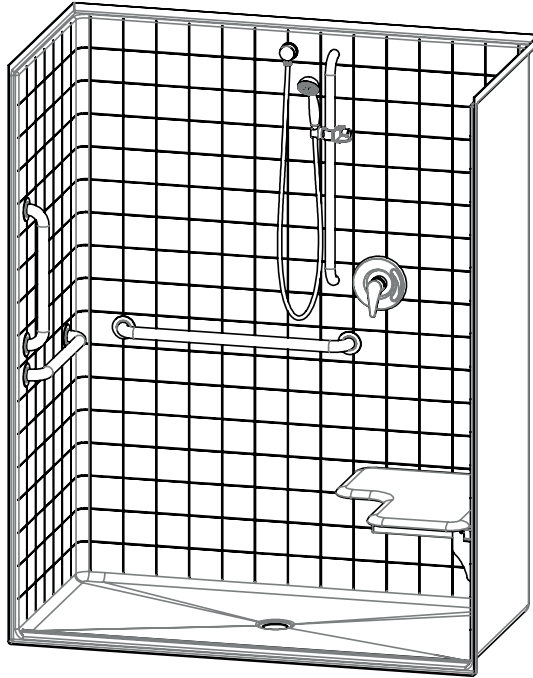
1623BFSTD – ACCESSIBLE SHOWERS

inches

Interior: 60 x 30 x 74 ⁷/₈

Exterior: 62 x 32 ¹/₄ x 76 ⁷/₈

The 1623BFSTD roll-in shower features innovative installation design, including an engineered leveled base and improved front threshold. A true time and money saver, our pre-leveled base lets you install directly on a **level** floor. And its front threshold is engineered to keep a constant level without the use of brackets during installation.



AQUATIC ADVANTAGE

- National distribution
- 7 manufacturing facilities
- Private fleet
- Centralized customer service
- Field support

COLOR & TRIM OPTIONS

Stock	Upgraded
White	Almond Biscuit Bone

**Additional custom colors available.
(Contact Customer Service)

FEATURES

- Pre-leveled base
- AcrylX™ applied acrylic surface
- ³/₄ skirt
- ¹/₂ beveled threshold
- Barrier free when properly installed
- Smooth tile
- Center drain
- Lifetime limited warranty (30 year commercial)

OPTIONS

- Grab bars
- Fold-up seat
- Hand-held shower assembly with slide bar
- Pressure balancing mixing valve
- Soap dish
- Curtain rod and/or shower curtain

CODE COMPLIANCE

- ADA
- FHA
- ICC/ANSI A117.1
- IAPMO Z124-2017
- HUD UM73a
- CAN/CSA-B651-04
- CSA-B45-11

**Code compliant when fully equipped and installed according to guidelines.



Aquatic products may be specified as Lasco Bathware.

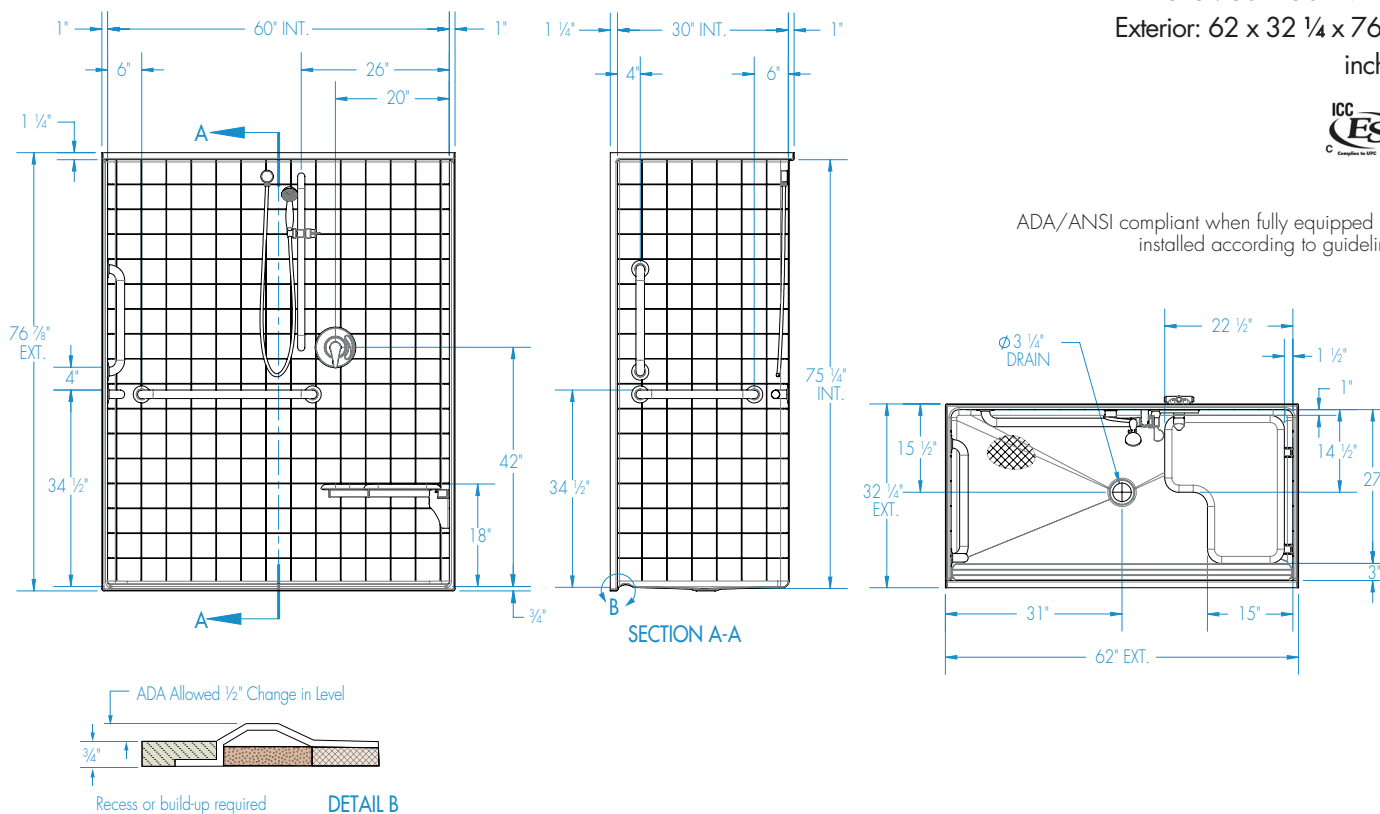


1623BFSTD

Interior: 60 x 30 x 74 7/8
 Exterior: 62 x 32 1/4 x 76 7/8
 inches



ADA/ANSI compliant when fully equipped and installed according to guidelines.



FEATURES

Dimensional Tolerance $\pm 3/8$ ". Dimensions needed for site preparation should be measured from the unit. Aquatic assumes no responsibility for preparatory work.

Type and Model #	Material	Wall Finish	Pieces	Drain	Dam/Skirt Height	Net Wt. lbs	Pkg. Wt. lbs
Shower #1623BFSTD	AcrylX™	Smooth tile	1	Center	3/4" skirt, 1/2" threshold	180	190

DIMENSIONS

Specifications	inches
Width: Overall / Net	62 / 60
Depth: Overall / Net	32 1/4 / 30
Height: Overall / Net	76 7/8 / 74 7/8
Enclosure Opening:	60
Skirt Height:	3/4
Drain Rough-In (from Back Wall)	15 1/2
Drain Rough-In (from Side Wall)	31

FRAMING DIMENSIONS inches

Type	D Depth	W Width	H Height	A	B	C
Alcove	32 1/4	62 1/8	-	Box Out	31	15 1/2

