

36" Transfer Showers: LH/RH = SEAT location.  
 Fixture is located opposite seat. Reference submittal sheet for details.

### ADDITIONAL INFO

#### COLORS

#### STOCK

White

#### UPGRADED

Almond\*

Biscuit

Bone\*

\*Available on AcrylX™ models only.

NOTE: Additional grab bars available.  
 See page 156.

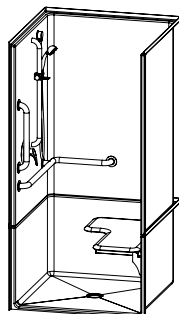
Aquatic reserves the right to discontinue models, colors, options and trim finishes without notice.

## 1363BFC2P

36 x 36 x 75 ¼ Interior

39 x 38 ¾ x 77 ¼ Exterior

AcrylX™ applied acrylic

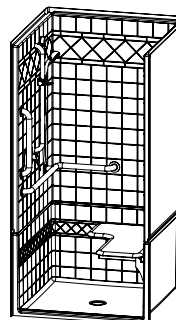


## F1364P

36 x 36 x 77 ¼ Interior

39 ¾ x 39 x 78 ½ Exterior

AcrylX™ applied acrylic



#### ADDITIONAL FEATURES

- ¾" skirt
- NO interior threshold
- Level base
- Barrier free when properly installed
- 2-pc
- Smooth wall
- Center drain

CONFIGURATION	DRAIN	SEAT	PRICE
---------------	-------	------	-------

Base	Center		\$1,367
	Center		\$1,591
	Center	LH/RH	\$2,218
	Center	LH/RH	\$2,953

#### ADDITIONAL FEATURES

- 1" skirt
- ½" beveled threshold
- Level base
- Barrier free when properly installed
- 4-pc
- Diagonal tile design

CONFIGURATION	DRAIN	SEAT	PRICE
---------------	-------	------	-------

Base	Center		\$1,616
	Center		\$1,840
	Center	LH/RH	\$2,467
	Center	LH/RH	\$3,202

OPTIONS PRICE LIST	PRICE
--------------------	-------

AcrylX™ Stock color	No charge
AcrylX™ Upgraded color	\$35
L-shaped grab bar: 18" x 32"	\$224
Straight grab bar: 18"	\$130
L-shaped fold-up seat - cushioned (stock)	\$627
L-shaped fold-up seat - phenolic white or phenolic teak	\$652
Pressure balancing mixing valve	\$312
Handheld shower assembly with slide bar	\$293
Shower curtain for 36" curtain rod	\$70
Stainless steel curtain rod: 36"	\$52
Brass drain	\$32
Soap dish - stainless steel	\$82
Vinyl flexible dam	\$87
Removable threshold	\$131
Finish repair kit	\$198
Grab bar reinforcement - per wall (all flat surfaces)	\$58
Crating	\$440

OPTIONS PRICE LIST	PRICE
--------------------	-------

AcrylX™ Stock color	No charge
AcrylX™ Upgraded color	\$35
L-shaped grab bar: 18" x 32"	\$224
Straight grab bar: 18"	\$130
L-shaped fold-up seat - cushioned (stock)	\$627
L-shaped fold-up seat - phenolic white or phenolic teak	\$652
Pressure balancing mixing valve	\$312
Handheld shower assembly with slide bar	\$293
Shower curtain for 36" curtain rod	\$70
Stainless steel curtain rod: 36"	\$52
Brass drain	\$32
Soap dish - stainless steel	\$82
Finish repair kit	\$198
Grab bar reinforcement - per wall (all flat surfaces)	\$58
Crating	\$440